

# Back to the Future

by Eddie Tapp

## series #3

### Portrait Enhancement

All portraits need some kind of enhancement. This technique utilizes Photoshop's Gaussian Blur filter, and History Brush and is designed to enhance the skin tone. Additional enhancements include the Rubber Stamp, Healing Brush Tool, Burn & Dodge tools and Unsharp Mask filter that are not included in the PDF file. Please note: in all Back to the Future techniques, steps 1, 2 and 3 must be completed in the exact order.



#### 1) Run the **Gaussian Filter**...

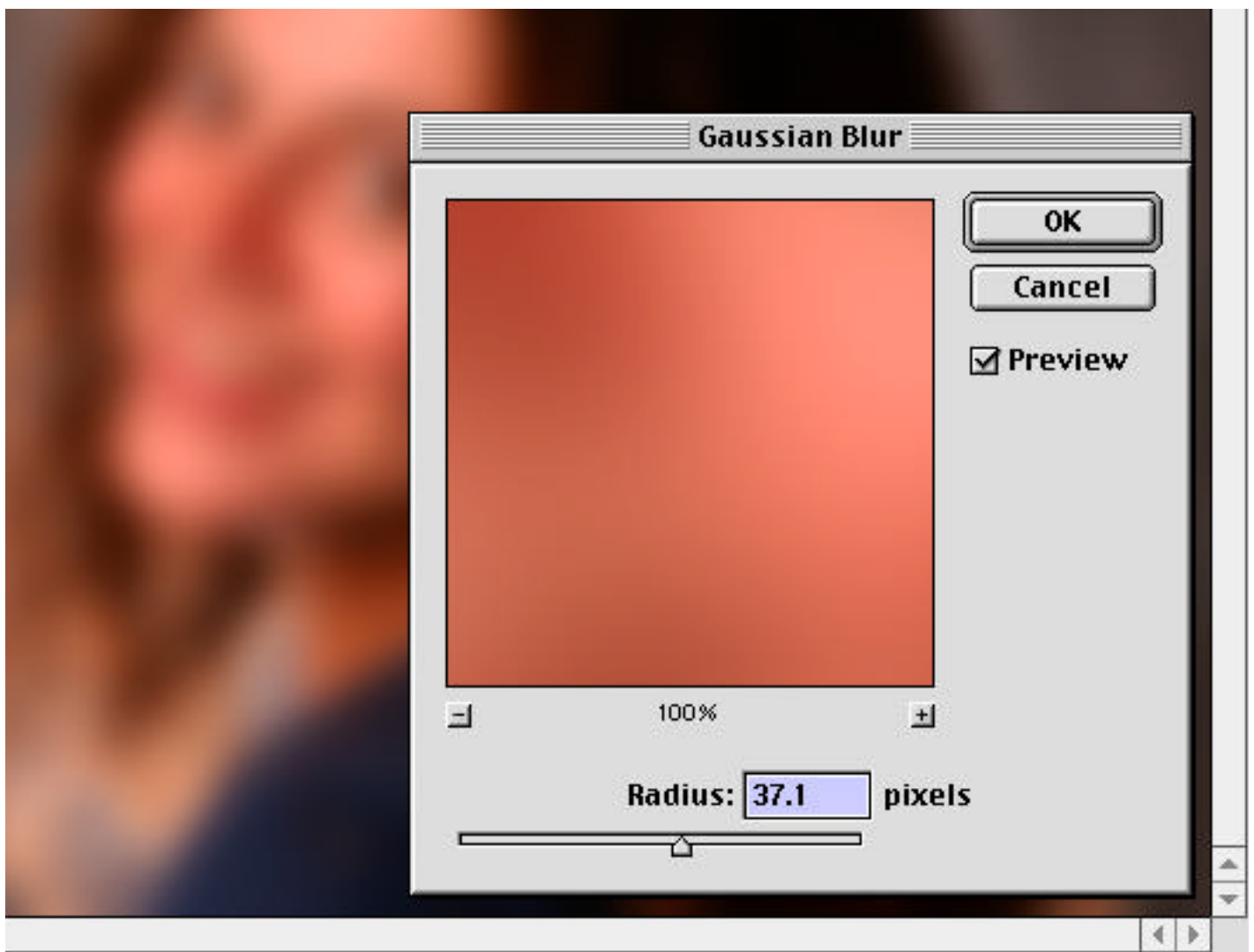
(->Filter ->Blur -> Gaussian Blur -  
Women 20 to 40 pixels, Men 10  
to 20 pixels)

Set the Radius to smooth skin  
tone and color.

Note: This will create a very  
blurred image.

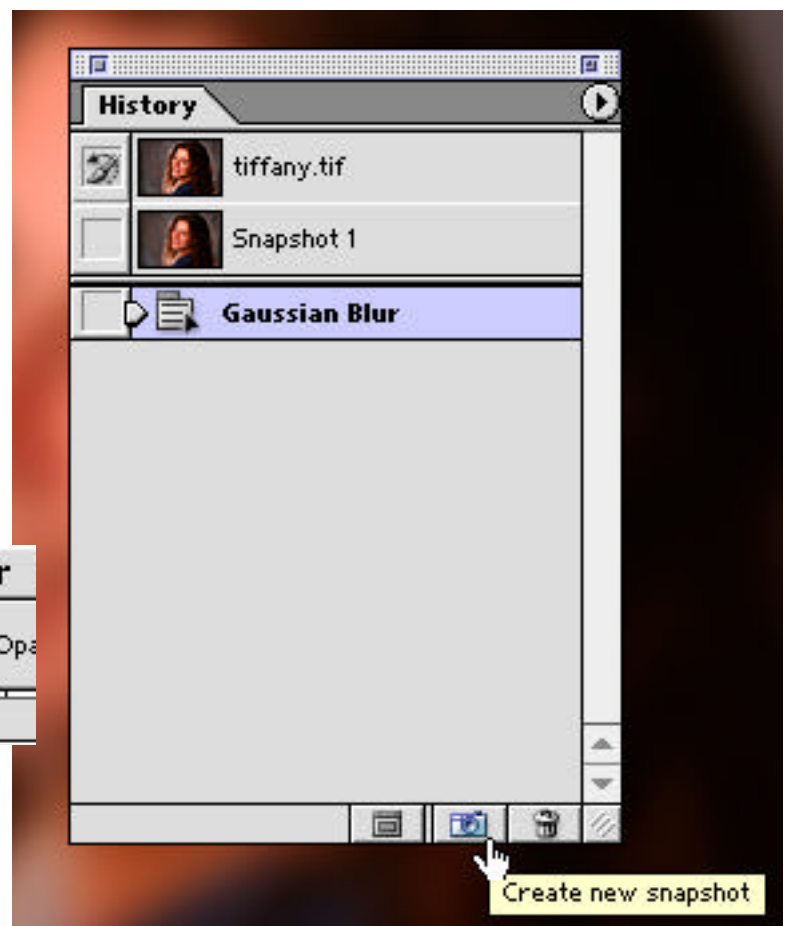
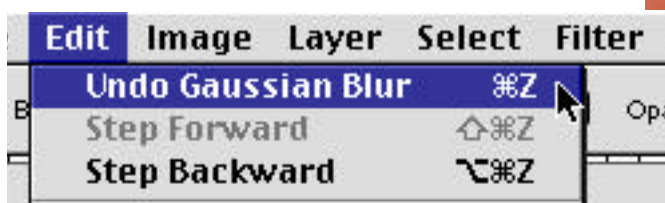
(see next page)





2) In the History Window, **Take Snapshot**. Simply click on the “Create new snapshot” icon at the bottom of the history window.

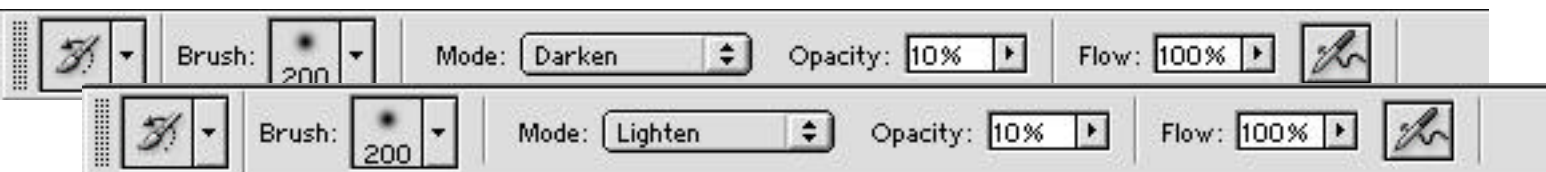
3) Edit **UNDO** Gaussian Blur filter  
(Command or Control Z).



4) Next select the source for the history brush by clicking in the column next to the history state that you want to work from (the Gaussian Blur Snapshot 1).

5) Next select the History Brush and set the history brush OPTIONS to mode **DARKEN** with the **OPACITY** set between 10% and 20%. Using the History Brush with a medium soft edge, apply brush strokes on the skin tone avoiding the hair, eye, lips and clothing until you have painted the entire skin tone. Use multiple strokes and apply more strokes on the lighter regions of the skin tone. Switch the blending mode to **LIGHTEN** and select your working **OPACITY**, once again apply multiple strokes on the skin tone applying more strokes now on the darker regions.

Next in the History Window, select the original snapshot to work from in the LIGHTEN blending mode to paint back in the specular highlights.



6) Finally, use the Rubber Stamp tool, Healing Brush and Patch tool where needed. Use the Burn & Dodge tools to enhance the eyes, teeth and the Unsharpmask filter to apply final sharpness.



### **Tips & Notes:**

This technique will take a little experiment on your part to customize the OPTIONS of the History Brush. Use various opacities, darken and lighten modes. Also be careful not to brush into the eyes, lips, teeth and easy around the hair too. However, if you need to, you can always select the original History state to work from if you over brush. Additional eye and teeth enhancement using the burn and dodge tools at various but low opacities and then use the Unsharpmask filter to bring out eye and hair detail.

© Eddie Tapp