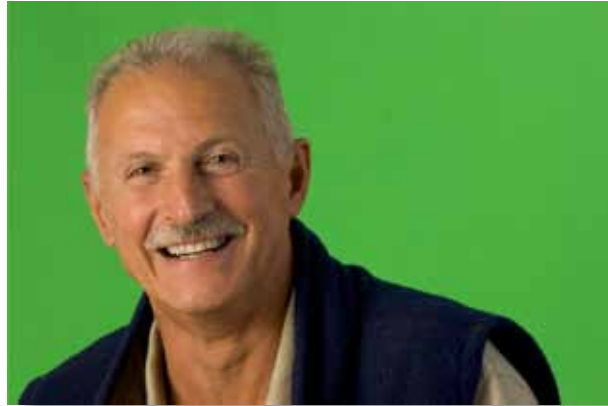


CS4 Chroma Key Masking

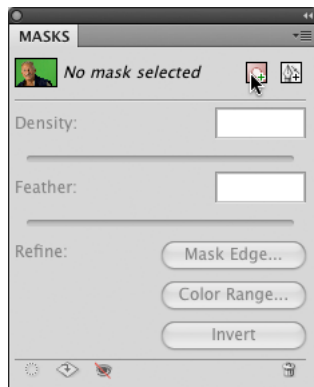
With EDDIE TAPP

MASKS Panel Chroma Key Masking

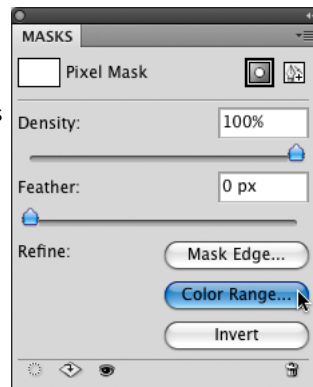
For quick and easy masking, try using a green screen type of background. If you Google "Green Screen" or "Chroma Key" you'll come up with a host of options for creating a Chroma Key background from pop out and fabric backgrounds to specialized Chroma Key paint, all in either Green and Blue colors. TIP: light your subject and background separately.



CS4 has made like easier once again with the improved more sensitive Color Range command and the Masks Panel is a great place to start.

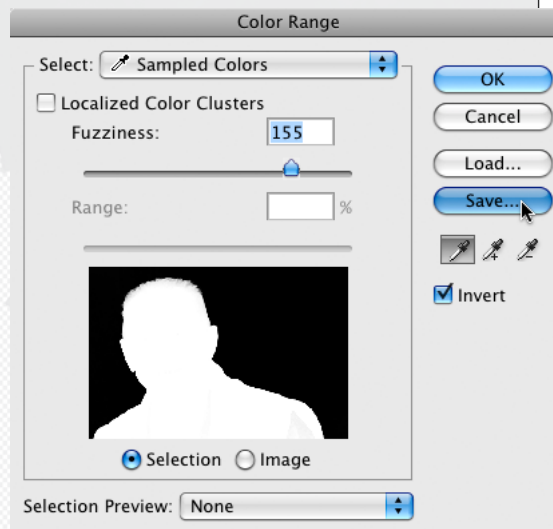


Step One: In the **MASKS** Panel click on the Add a Pixel Mask button. This will instantly convert your Background into a floating Layer as it creates the Layer Mask.



Step Two: Select the Color Range command by clicking on the Color Range button (or you can access Color Range from the Select menu options) as this will bring up the user interface.

Step Three: Position your cursor over your image as it automatically becomes the Eyedropper Tool. Click once on the background to show a range of color (use Invert if necessary), then hold the Shift key to add additional color range until your Color Range preview shows only the background, and view your image on the screen as it will show a live preview of your selected range. In this project we will not use the Localized Color Cluster option but by moving the Fuzziness slider, you can increase the edge wrapping until you like the edge on the live preview.



CS4 Chroma Key Masking

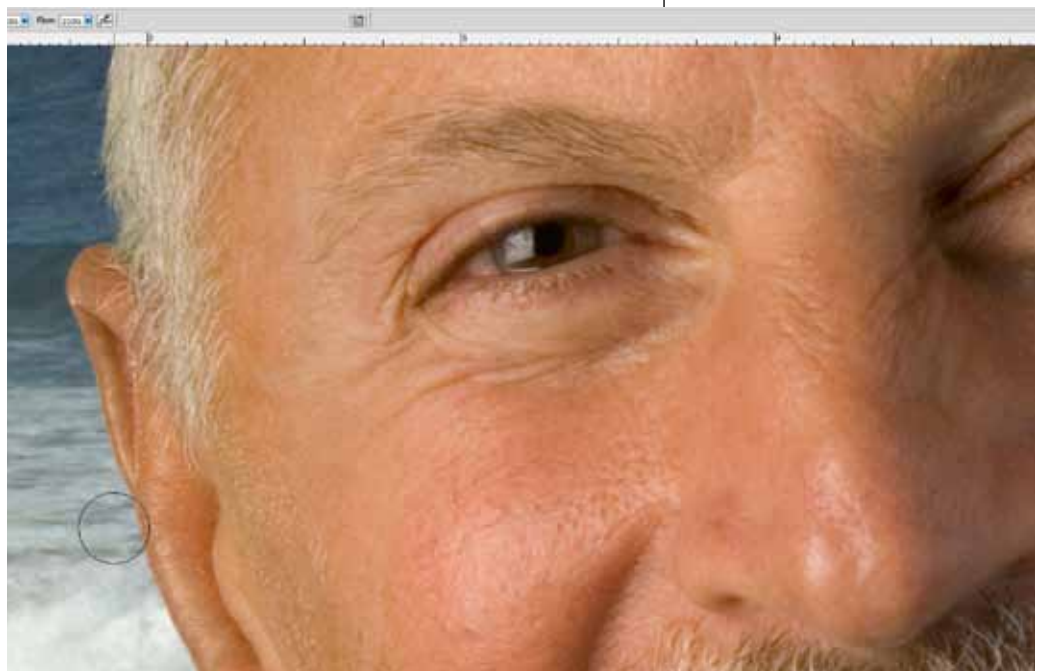
With EDDIE TAPP



Step Four: Merge two images by moving one onto the other. In this example, both images are the exact same resolution and by holding down the Shift key when using the Move Tool, both images will register perfectly.

Step Five: Refine your edge. Color Range worked very nicely in removing the Chroma Key color but there could be color fringing. Zoom up to the 100% zoom ratio and inspect your edge.

Step Six: Remove color fringing by selecting the Brush Tool and in the blending options choose the **Color** blend mode. By holding down the Option Key (Alt Key on Windows) your cursor will turn into the eyedropper tool. This allows you to click anywhere on your image to set the foreground color to paint with, and because you're in the Color blend mode, painting now will colorize your pixels. Option or Alt click as often as necessary to set the color to paint with and use a lower Opacity setting to blend in.



CS4 Chroma Key Masking

With *EDDIE TAPP*



CS4 Chroma Key Masking

With *EDDIE TAPP*



2006 Photoshop Hall of Fame inductee, Eddie Tapp is an award-winning photographer, lecturer, consultant and author on digital imaging issues. As an award-winning photographer Eddie has been actively involved in educating and consulting corporations, studios and agencies in the applications of digital imaging workflow, color management, pre-press and digital photography globally.

Eddie is Director of the Institute of Visual Arts in Maui, Hawaii. He served 6 years as the Chairman of the Committee on Digital and Advanced Imaging for the Professional Photographers of America where he holds the Master of Photography, Master of Electronic Imaging & Photographic Craftsman degrees, API (Approved

Photographic Instructor), and is a Certified Professional Photographer. Along with producing interactive educational CD's with Software-Cinema, he has a series of educational videos at KelbyTraining.com, his articles have appeared in Photoshop User, The Professional Photographer, Photo Electronic Imaging, Rangefinder, Southern Exposure, Digital Capture and others and is an Explorer of Light and Print Master with Canon USA and has a 2 books published by O'Reilly Media named "Eddie Tapp on Digital Photography" Eddie has started a new educational series named "Photography on Tapp", filming fun Photoshop and Photography techniques at a bar named Tap and will be on the Photography Network.

www.eddietapp.com