

# Back to the Future

by Eddie Tapp

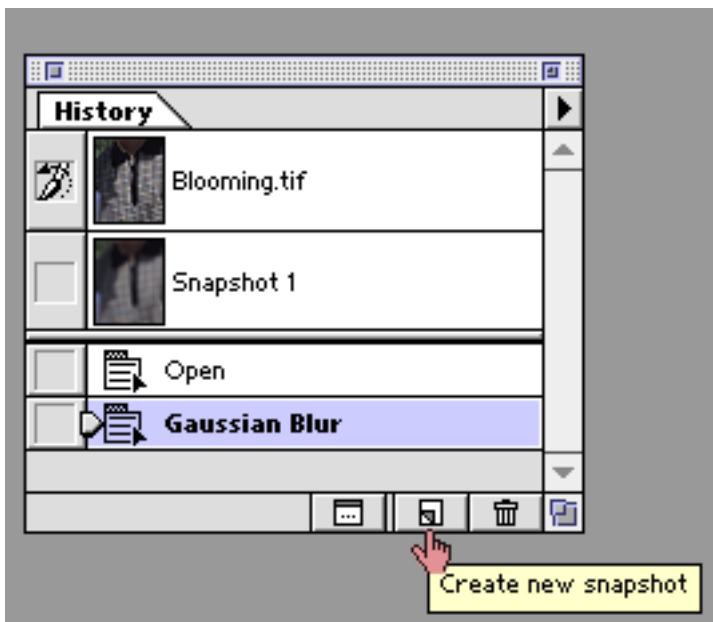
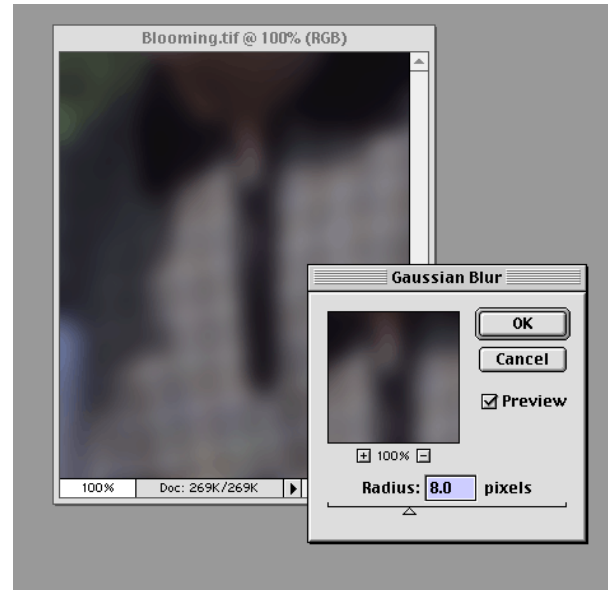
## series #2

### Controlling Blooming Colors

Digital scans and digital camera files will sometimes create Blooming Colors, also known as pixel noise. This technique utilizes Photoshop's Gaussian Blur filter and the History Brush. Please note: in all Back to the Future techniques, steps 1, 2 and 3 must be completed in the exact order.

#### 1) Run the **Gaussian Filter**...

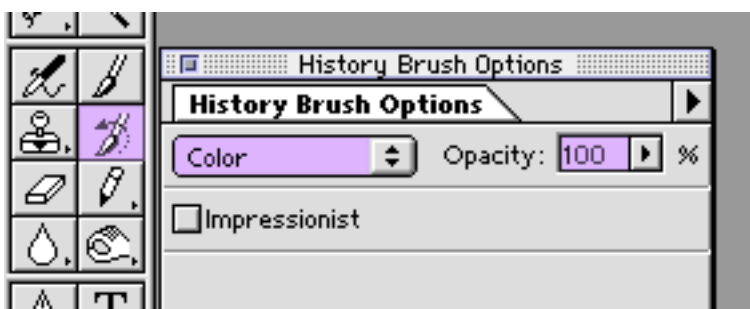
(->Filter ->Blur -> Gaussian Blur)  
Set the Radius to eliminate the blooming colors.



#### 2) In the History Window,

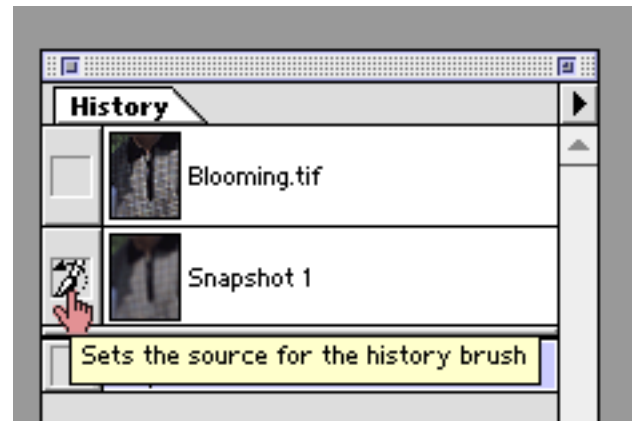
**Take Snapshot.** Simply click on the "Create new snapshot" icon at the bottom of the history window.

#### 3) Edit **UNDO** Gaussian Blur filter (Command or Control Z).



#### 4) Next select the History Brush and set the history brush **OPTIONS** to mode **COLOR** and select your working **OPACITY**.

5) Now select the source for the history brush by clicking in the column next to the history state that you want to work from (the Gaussian Blur Snapshot 1)



6) Finally, select your brush size and wisk away the Blooming Colors.

Tips & Notes:

You can see this clearly if you zoom the image to the 100% zoom ratio in Photoshop. This technique will minimize blooming colors, but be careful not to over do it and be sensitive to possible *bleeding colors*. By setting the history brush option to mode **COLOR** (see #4) the brush will only apply color from the blurred history state leaving the pixel detail in tack.



You can set this technique up in an action for steps 1 & 2, but remember to UNDO immediately after.

